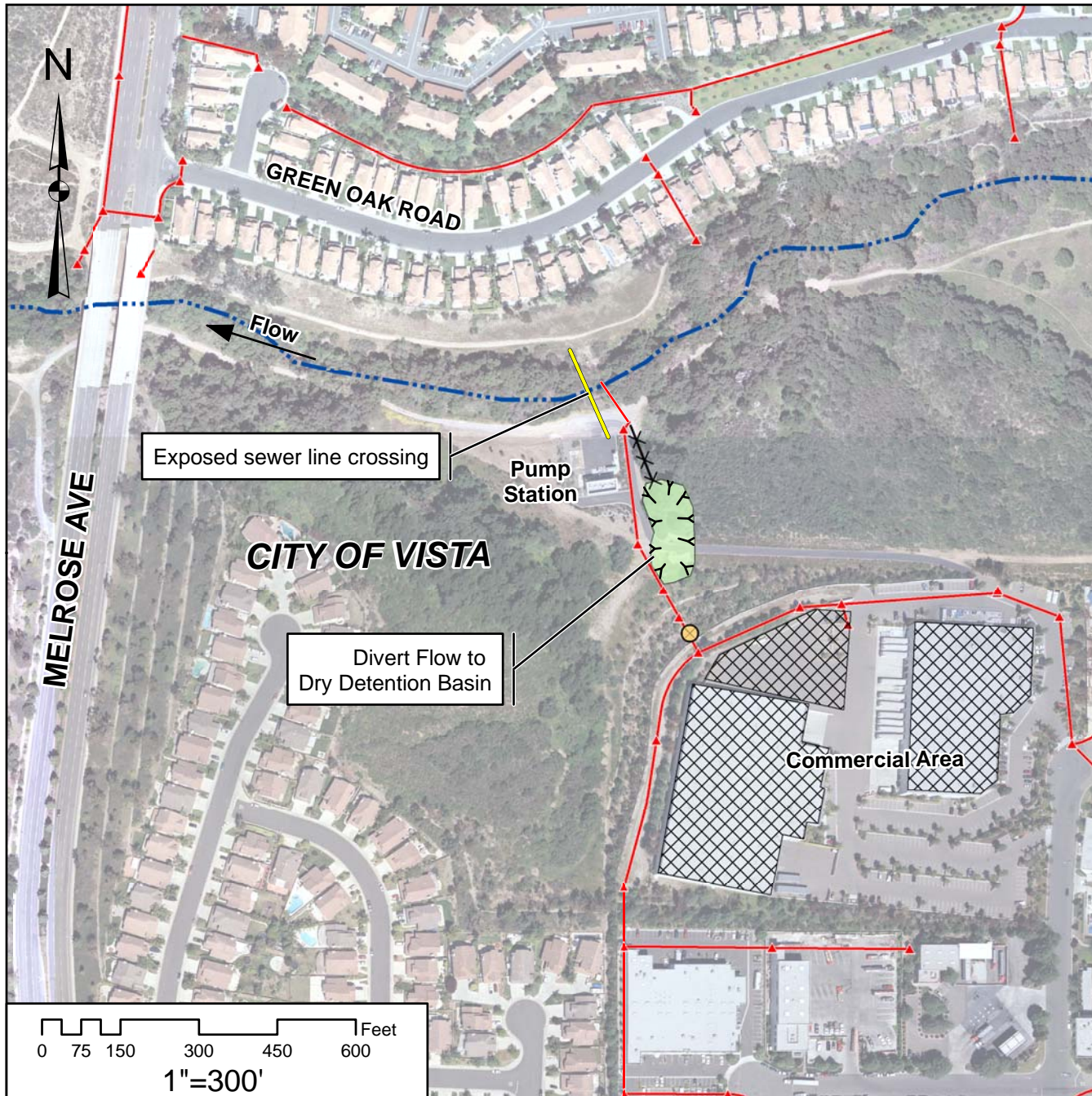


## Appendix E. BMP Retrofit Concept Sheets

(This page left intentionally blank.)

# Site #SW-1: Adjacent to Agua Hedionda Reach 14-15



## Major Issues

- Stormdrain discharge contributing to creek scour
- Exposed sewer line
- Water quality degradation due to untreated urban runoff
- High water temperatures from large paved areas

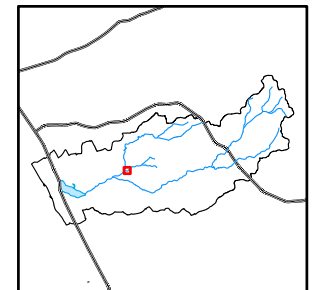
## Retrofit Opportunities

- Oil and Grease filters
- Install pervious paving
- Dry Detention Basin
- Rainwater capture systems
- Incorporate with restoration site SR-2

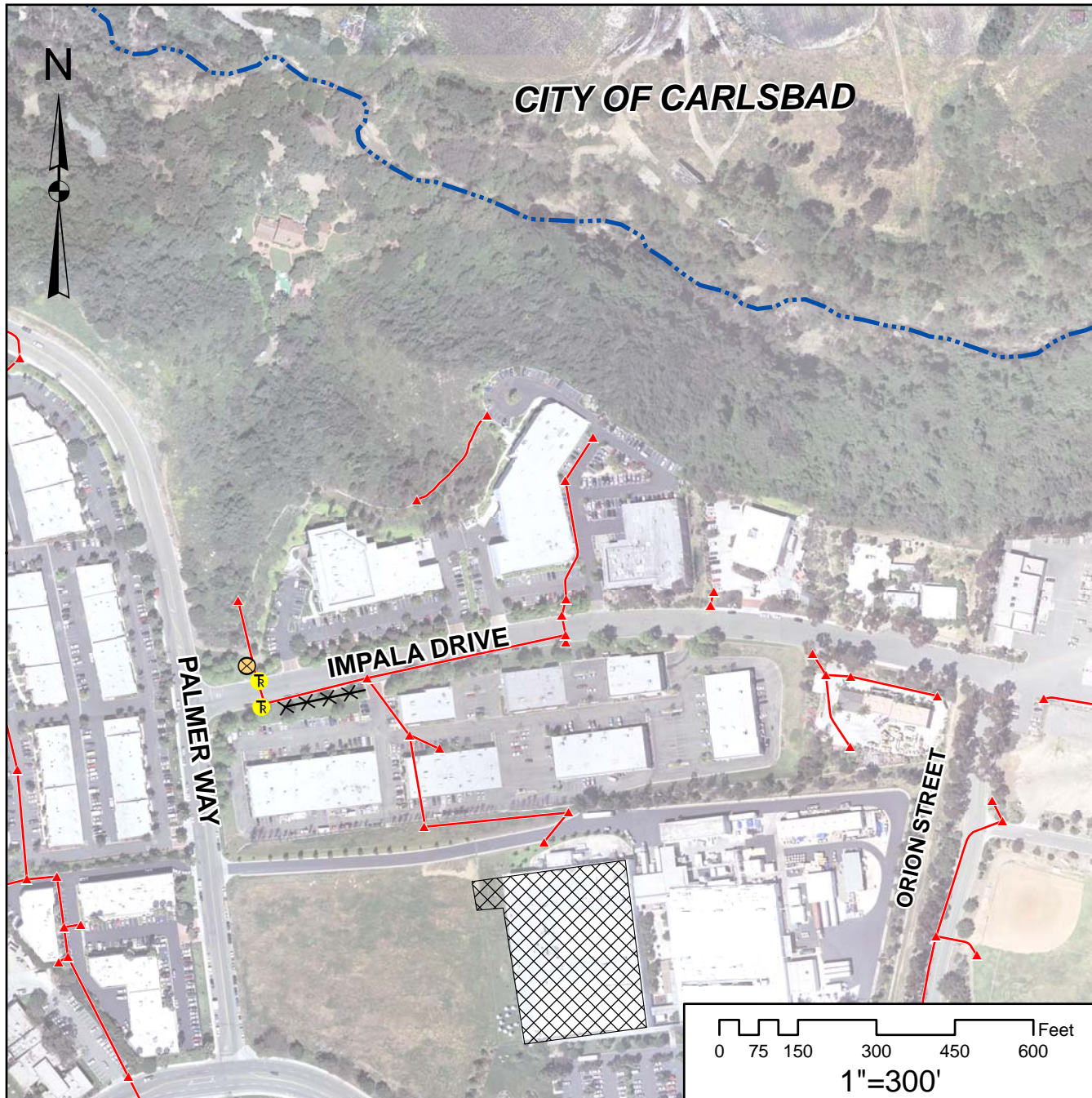
## Legend

- ⊗ Oil/Grease Filters
- X-X-X Bioswales
- Dry Detention Basin
- ▨ Pervious Pavement & Rainwater Capture
- ▲ Stormdrain Structures
- Stormdrain Lines
- ⋯ Stream Channel

JURISDICTION:  
Vista  
OWNERSHIP:  
Public & Private



# Site #SW-2: Adjacent to Agua Hedionda Reach 18a



## Major Issues

Large impervious surfaces

## Restoration Opportunities

- Rainwater capture systems
- Trash traps
- Oil and grease filter
- Incorporate with restoration site SR-4

## Legend

● TrashTrap

⊗ Oil/Grease Filter

×××× Bioswales

▣ RainwaterCapture

▲ Stormdrain Structures

— Stormdrain Lines

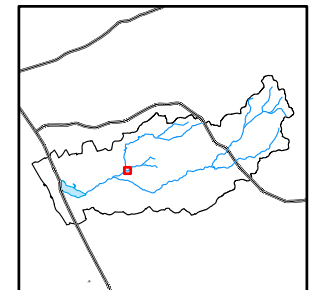
--- Stream Channel

JURISDICTION:

Carlsbad

OWNERSHIP:

Public & Private



# Site #SW-3: Adjacent to Agua Hedionda Reach 18b



## Major Issues

Hillslope erosion from development  
Untreated stormwater degrading water quality

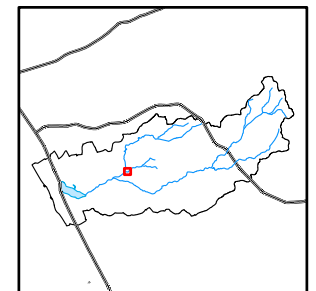
## Restoration Opportunities

- Dry Detention basin
- Trash traps
- Oil and grease filter
- Incorporate with restoration site SR-4

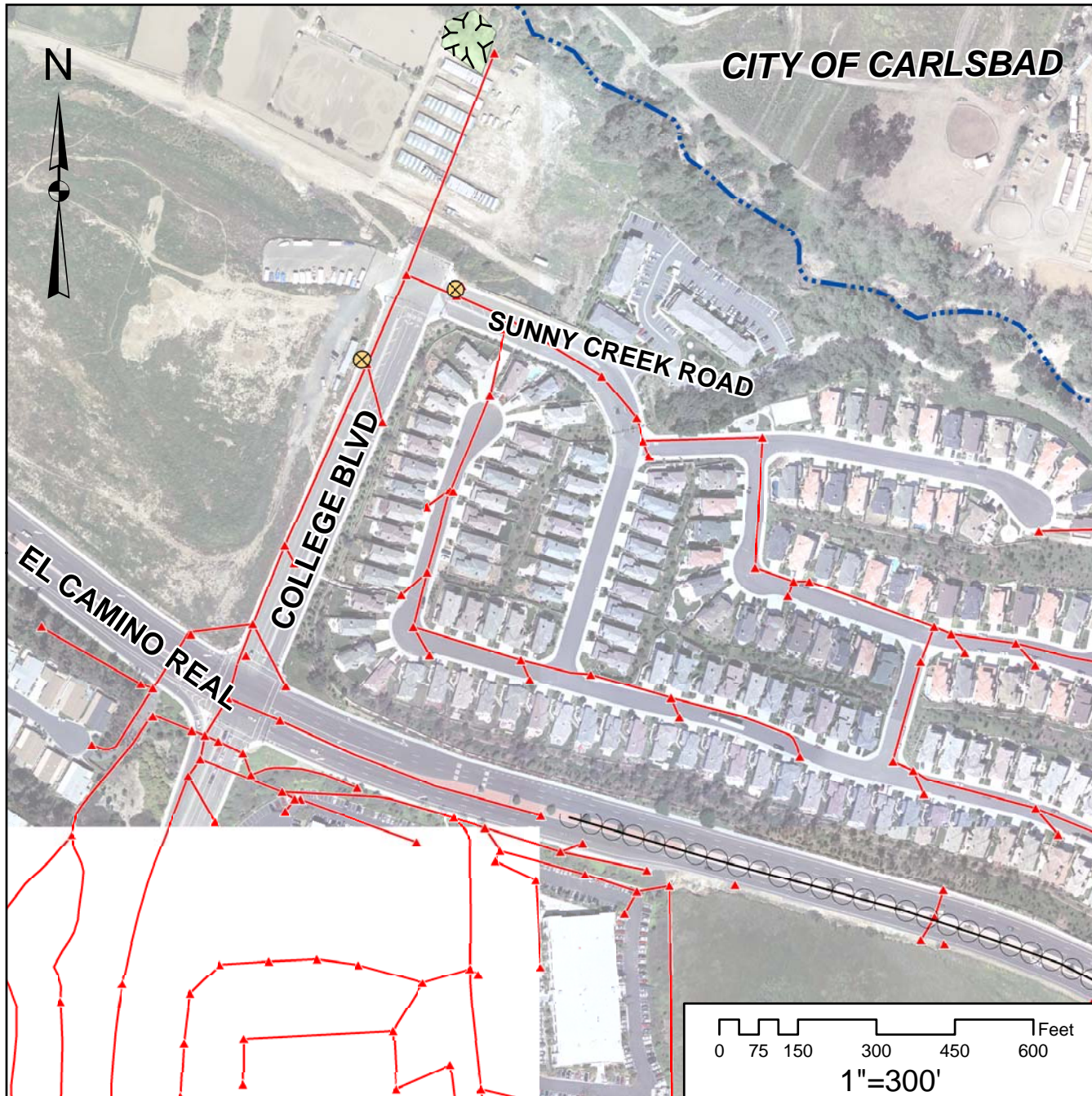
## Legend

- Ⓡ TrashTrap
- ⓧ Oil/Grease Filter
- Dry Detention Basin
- ▲ Stormdrain Structures
- Stormdrain Lines
- Stream Channel

JURISDICTION:  
Carlsbad  
OWNERSHIP:  
Public & Private



# Site #SW-4: Adjacent to Agua Hedionda Reach 18c



## Major Issues

- Large stormdrain system discharges near natural creek
- Water quality degradation from untreated runoff

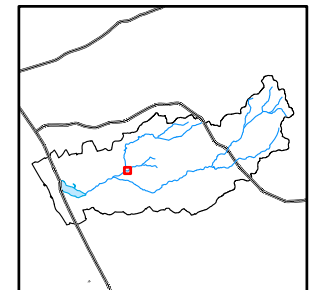
## Restoration Opportunities

- Dry Detention basin
- Oil and grease filter
- Replace road median with vegetation
- Create infiltrating cut-outs into road median curbing
- Incorporate with restoration site SR-4

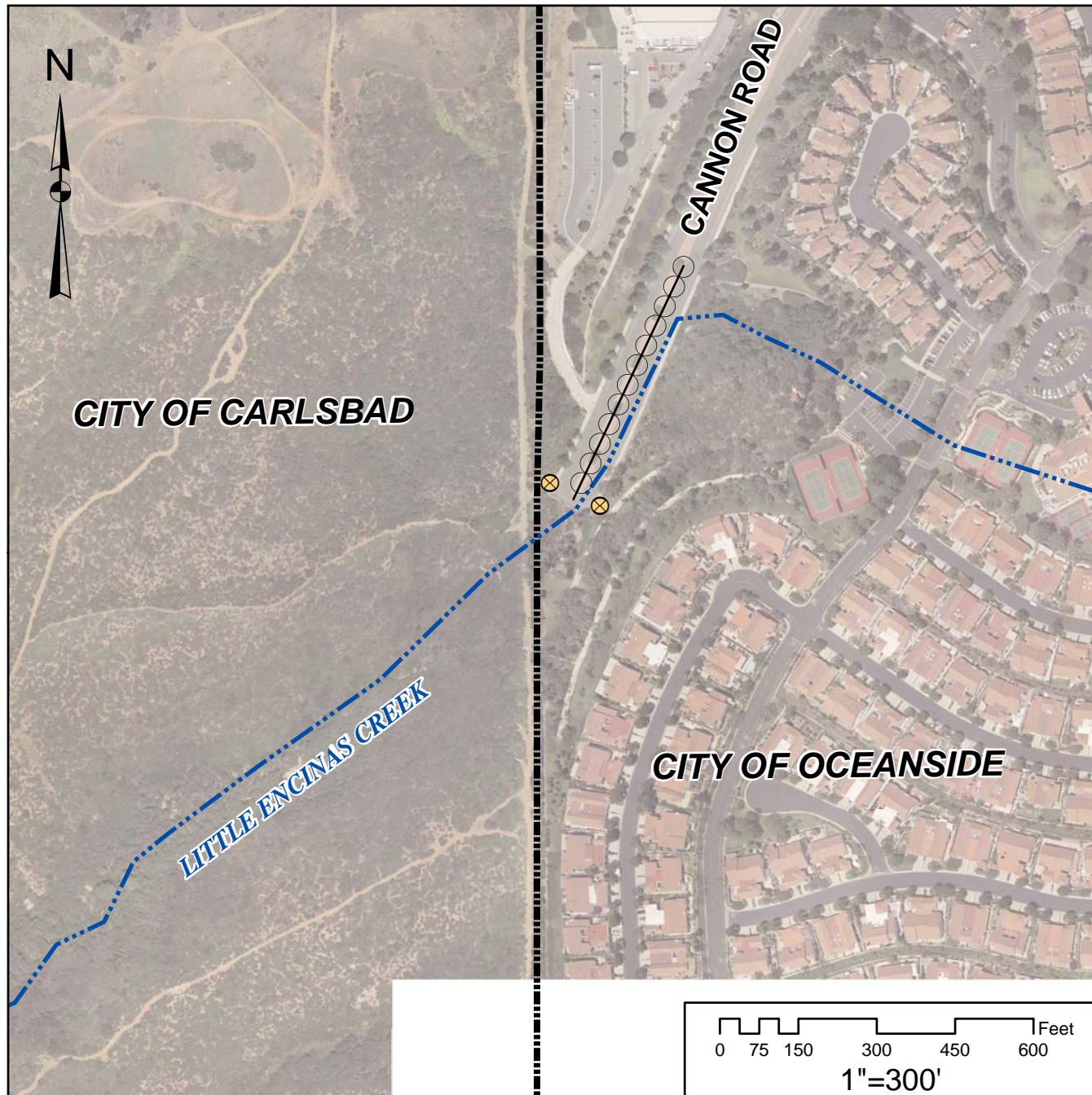
## Legend

- Oil/Grease Filter
- Depressed Median
- Dry Detention Basin
- ▲ Stormdrain Structures
- Stormdrain Lines
- Stream Channel

JURISDICTION:  
Carlsbad  
OWNERSHIP:  
Public & Private



# Site #SW-5: Adjacent to Little Encinas Creek Reach 63



## Major Issues

- Increased flow velocities from Cannon Road
- Untreated stormwater degrading water quality

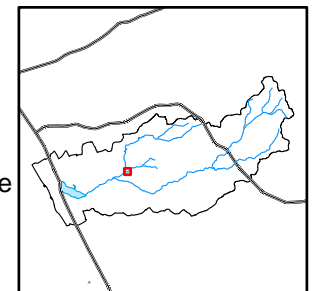
## Restoration Opportunities

- Oil and grease filter
- Replace road median with vegetation
- Create infiltrating cut-outs into road median curbing
- Incorporate with restoration site SR-10

## Legend

- ⊗ Oil/Grease Filter
- Depressed Median
- · — Stream Channel/Path

JURISDICTION:  
Carlsbad & Oceanside  
OWNERSHIP:  
Public & Private



(This page left intentionally blank.)